

**EASY-LASER<sup>®</sup>**



# Product Overview

**XT**

# Generation XT

— an age of independence



## All XT programs in one free app

All XT measurement programs in one straightforward application available for free. Functionality for iOS, Android and Easy-Laser® XT display units.



## No lock-ins

Buy with or without the user-friendly, shockproof and waterproof industrial grade Easy-Laser® XT12 display unit. Built-in IR camera available as an option.



## Maximum flexibility and trainability!

Purchase multiple systems with various capabilities, train once! The training costs are minimized significantly since the app interface and basic functionality is identical for all systems.



## Share files

Share via email directly from your display unit.



## Built-in help

Searchable Users Manual which opens the relevant chapter depending where in the process you are.



## Multi-lingual

The XT Alignment App is available in multiple languages: en / de / sv / es / pt / ru / ja / ko / zh / it / fr / pl / fi / tr





# Shaft alignment

## Easy-Laser® XT770 Shaft

For solving measurement and alignment problems of all kinds on most machine types. The XT70 measuring units (pictured right) allow for multipoint, continuous sweep and uncoupled sweep measurements. They also support the 360°LIVE move feature. Includes the adjustment guide feature. Also includes a wide range of shaft brackets as standard.

Large 20x20 mm [0.79x 0.79"] 2 axis TruePSD detectors. Dot-type laser technology for accuracy and versatility.

## Easy-Laser® XT770 Shaft+GEO

Includes separate flatness laser transmitter for precision measurement of e.g. foundations. Please see page 6 for more information about geometrical measurements with XT770.



- A. PSD aperture
- B. Laser aperture
- C. Laser angle adjustment
- D. OLED display: battery status/ unit angle
- E. Chain tightening knob
- F. Charger connector
- G. Extendable stainless steel rods
- H. Locking knob
- I. Slidable target/dust cover

## Easy-Laser® XT660 Shaft

With the XT660 you can deal with all the important steps of machine installation and maintenance. The XT60 measuring units allow for multipoint, continuous sweep and uncoupled sweep measurements.

Large 20x20 mm [0.79x 0.79"] 1 axis TruePSD detectors. Dot-type laser technology for accuracy and versatility.



## Easy-Laser® XT660 Shaft SG1 Wind

For alignment of generator to gearbox on Siemens Gamesa (SG) wind turbines of different models.

## Easy-Laser® XT660 Shaft WMB Wind

For alignment of generator to gearbox on wind turbines. The Wind Multi-Brand system has brackets included for use on multiple brands and models.



## Easy-Laser® XT550 Shaft EX

The intrinsically safe, EX Zone 1/21 approved XT550 system has the same basic functionality as XT660, but can also handle unlimited machine trains, plus it has the adjustment guide feature. Add the ecom Tab-Ex® display unit approved for use in potentially explosive areas.



## Easy-Laser® XT440 Shaft

Even if this is our entry-level system it beats most other systems in this category, running the XT Alignment app with functions for most maintenance needs. Large 30 mm [1.2"] 1 axis TruePSD detectors. Line laser technology for easy and quick operation.



# Shaft alignment brackets

We have brackets for all types of applications. Brackets A, B and C are delivered as standard with systems as indicated within brackets below.

A. V-bracket (XT770/XT660/  
XT550/XT440)

B. Offset bracket (XT770)

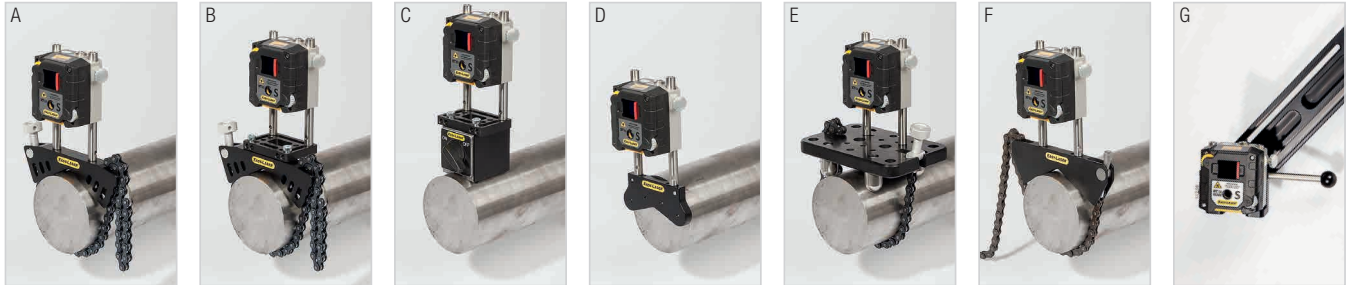
C. Magnet base (XT770)

D. Magnetic bracket

E. Sliding bracket

F. Thin shaft bracket

G. Cardan bracket kit



## Dynamic measurements

### Easy-Laser® XT DM brackets

Dynamic Measurement (DM) brackets are used together with the EasyTrend program to keep track of machine movement over time. For example, you can check for thermal expansion and pipe strain issues. Works with the XT770 system.



## Vibration measurements

### Easy-Laser® XT280 VIB

Easy-to-use vibration analyzer that quickly diagnoses vibration level, unbalance, misalignment and looseness.

The direct readout of 1x, 2x, 3x RPM, total level as well as bearing condition provides necessary information during installation and alignment.

The XT280 connects to the XT Alignment app, making it possible to document the result as PDF, with photo and comments for each measurement point.



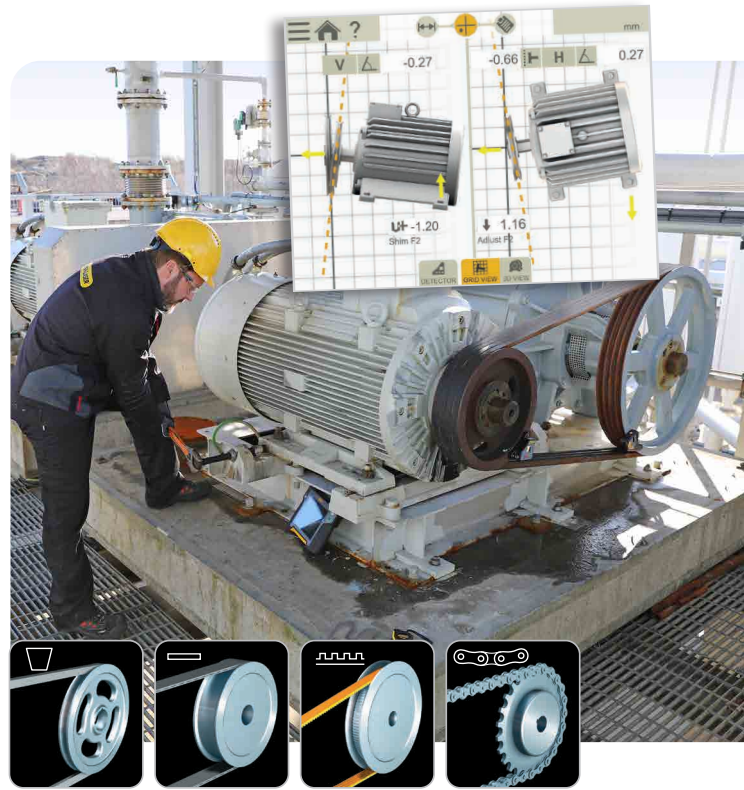
7.5	ISO mm/s
23 BDU	0.4 g



# Belt transmission alignment

## Easy-Laser® XT190 BTA

Digitally displays the parallel and angular misalignment “live”, at the place where you adjust. Align to manufacturer specified tolerances. Use it as an add-on to the XT770, XT660, and XT440 systems, or as a standalone tool thanks to the built-in display. Connects to the XT Alignment app, where you can document the result as PDF with photos.



For almost all belt drives: V-belt, timing belts, flat belt and chain drives.

# Digital level

## Easy-Laser® XT290 Digital level

Digital levels are extremely useful tools for setting-up and aligning most types of machines. Use it for foundations, rolls, etc. It is the must-have add-on to the XT770, XT660, and XT440 systems. Connects to the XT Alignment app, where you can document the result as PDF with photos. You can also use it as a separate tool thanks to the built-in display.



# Thermal camera

## Easy-Laser® XT12 + Thermal camera

The Easy-Laser XT12 Display unit has the option to add a thermal imaging (IR) camera along with the standard 13 MP digital camera. Shoot a thermal image before and after alignment and include with the documentation!



# Geometric measurement

## Easy-Laser® XT980 Sawmill

This system can be used for both circular saws and band saws, as well as other components in the saw line like reducers, guide planes etc.



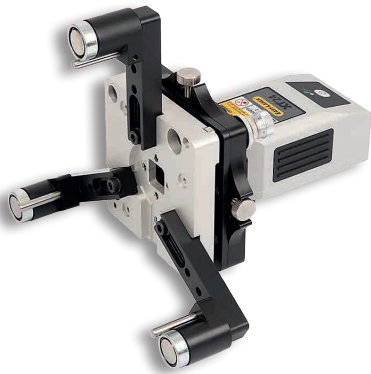
## Easy-Laser® XT770 Shaft+GEO

Includes the laser transmitter XT20 (pictured) or XT22 plus geo brackets. With these separate transmitters you satisfy the requirements for flatness and level mentioned in standards (e.g. ISO and ANSI/ASA). Please see page 3 of this brochure for more information about shaft alignment capabilities.



## Easy-Laser® XT950 Bore alignment

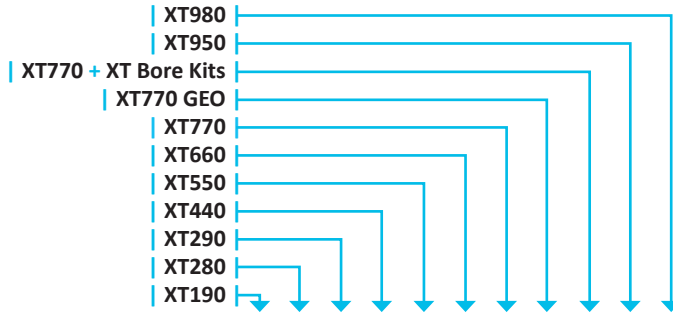
With this system you measure straightness of bore center lines, and align bearings and bearing journals in numerous applications. Measures both full bores and half bores. Multipoint measurement. Calculate best-fit. Suitable for use both in manufacturing and in field services activities.



## Easy-Laser® XT Bore alignment kits

These kits adds bore alignment possibilities to your XT770 system. The **Bore bracket kit** is used with your existing XT70-M unit. Includes laser transmitter XT24 and bore brackets. For diameters 130–500 mm [5.12–19.68"]. The Bore bracket kit can be upgraded with the **Bore upgrade kit**. This adds detector XT9 which allows measurements of even smaller diameters, 80–500 mm [3.15–19.68"].

# Programs and functions

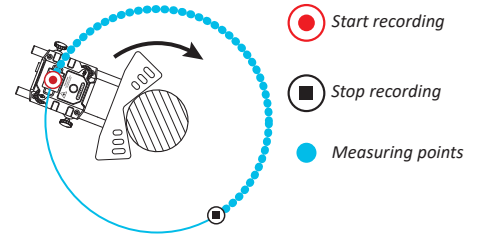


Please note that what you can measure is in reality depending on the measurement equipment included in your system, not the XT Alignment App. The app always includes all programs and functions, and is free to download.

Function	XT980	XT950	XT770 + XT Bore Kits	XT770 GEO	XT770	XT660	XT550	XT440	XT290	XT280	XT190
HORIZONTAL 9-12-3					●	●	●	●	●	●	●
MACHINE TRAIN (UNLIMITED)					●	●	●	●	●	●	●
MACHINE TRAIN (3 MACHINES/2 COUPLINGS)					●	●	●	●	●	●	●
SOFT FOOT					●	●	●	●	●	●	●
EASYTURN™					●	●	●	●	●	●	●
MULTIPOINT					●	●	●	●	●	●	●
CONTINUOUS SWEEP					●	●	●	●	●	●	●
UNCOUPLED SWEEP					●	●	●	●	●	●	●
WIDE LIVE					●	●	●	●	●	●	●
360 LIVE								●	●	●	●
ADJUSTMENT GUIDE								●	●	●	●
VERTICAL/FLANGE MOUNTED					●	●	●	●	●	●	●
CARDAN/OFFSET MOUNTED					○	○	○	○	○	○	○
VALUES					●	●	●	●	●	●	●
LEVEL					●	○	○	○	○	○	○
TWIST						○	○	●	●	●	●
BASIC FLATNESS								○	●	○	●
STRAIGHTNESS								○	●	●	●
BORE CENTER								○	○	●	●
EASYTREND™								○	○	○	○
BELT TRANSMISSION ALIGNMENT	●				○	○	○	○	○	○	○
VIBRATION MEASUREMENT		●			○	○	○	○	○	○	○

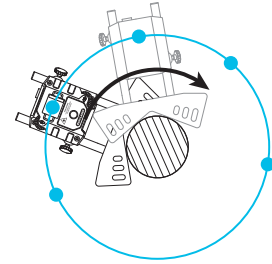
● Possible (necessary hardware included)

○ Accessories required



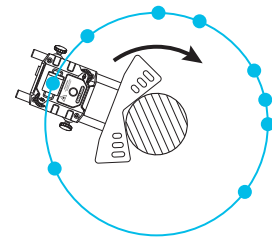
## CONTINUOUS SWEEP

Automatic recording of measurement values during continuous sweeping of the shaft.



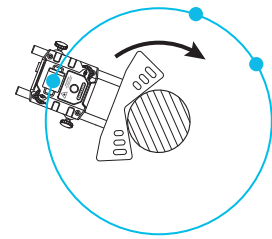
## UNCOUPLED SWEEP

Used when the machines are uncoupled and when the rotation can be difficult to control.



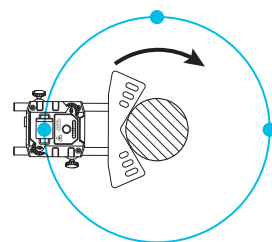
## MULTI POINT

Multi point is basically the same as EasyTurn™, but instead you can record multiple points on the sector rotated.



## EASYTURN

Ideal method for coupled machines where you manually rotate the shafts to any position.



## 9-12-3

Measurement points are recorded at fixed points 9, 12 and 3 o'clock.



**EASY-LASER®****PLUS™**

# Add extra power to your alignment system

*...and your team!*

## Power up with Easy-Laser PLUS™

Easy-Laser PLUS™ is our cloud solution where you:

- Collaborate with your maintenance team on job assignments.
- Collect all your team's measurement data in one place for quick overview and analysis.
- Copy your measurement data to a new device if your tablet is lost or damaged.
- Restore accidentally deleted files on your tablet.
- Receive information about the latest software updates.

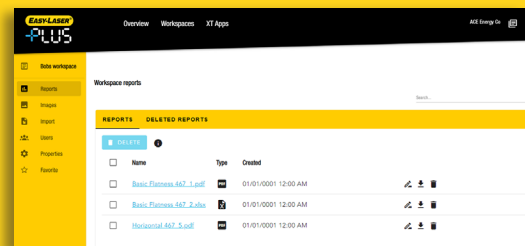
This is just the beginning. Easy-Laser PLUS™ will offer more possibilities that complement your measuring instrument and make it even more powerful.

## For Easy-Laser XT systems

Easy-Laser PLUS™ works with the XT app on third party tablets/smartphones, and with our XT12 or XT11 rev2 tablets. In your account you pair your device/device, making the data instantly available in the system everytime wifi is available.

## Get it now!

To start a subscription, visit [easylaser.plus](https://easylaser.plus) and register your account in a few easy steps.



Easy-Laser® is manufactured by Easy-Laser AB, Alfagatan 6, SE-431 49 Mölndal, Sweden  
 Tel +46 31 708 63 00, Fax +46 31 708 63 50, e-mail: [info@easylaser.com](mailto:info@easylaser.com), [www.easylaser.com](http://www.easylaser.com)  
 © 2024 Easy-Laser AB. We reserve the right to make changes without prior notification. Easy-Laser® is a registered trademark of Easy-Laser AB. Android, Google Play, and the Google Play logo are trademarks of Google Inc. Apple, the Apple logo, iPhone, and iPod touch are trademarks of Apple Inc., registered in the U.S. and other countries. App Store is a service mark of Apple Inc. 05-0619 Rev20

Authorized distributor

